

W Y M A N

Transforming Teens. Changing Communities.

# WYMAN TEENS IGNITE CHANGE

SINCE 2010, WYMAN AND ITS SUPPORTERS HAVE EMPOWERED MORE THAN 150,000 TEENS TO THRIVE.

# WYMAN IMPACT

**14.5 million young people in the U.S. face inequities.**

Poverty, lack of quality education and inconsistent connections with supportive adults create seemingly insurmountable obstacles.

**Our proven programs are empowering more than 4,800 teens regionally to succeed.**

Teens build educational success, life and leadership skills, healthy behaviors and supportive relationships to thrive.

**Wyman staff create a safe, caring environment for young people to navigate the teenage years.**

Wyman staff empower teens with skills to make tough decisions and bring their dreams to life. Youth are more likely to flourish when they build long-term bonds with adults who believe in them.

**Each year, Wyman teens are collectively dedicating more than 24,000 hours locally, and 250,000 hours nationally, to community service.**

Alongside Wyman's Teen Outreach Program® (TOP®) curriculum, these activities help teens build social and emotional skills—like teamwork, problem-solving, empathy and decision-making—demanded by today's workforce.

**Annually, 100 percent of Wyman's high school seniors graduate high school on-time, and 90 percent enroll in postsecondary opportunities.**

And, many of these students are first-generation college students. These early indicators of success are critical to improve the economic future of youth from disadvantaged backgrounds.

# CREATING PERMANENT, POSITIVE CHANGE

MEET WYMAN ALUM  
ALEXIS, WHO WILL  
GRADUATE FROM  
MISSOURI STATE  
UNIVERSITY AS THE  
**FIRST IN HER FAMILY  
TO GO TO COLLEGE.**



# THE JOURNEY OF ALEXIS' SUCCESS

Alexis participated in Wyman's programs focused on leadership and academic persistence, which served over 600 teens across the region in 2017. Wyman also served over 22,000 youth through its nationally replicated Teen Outreach Program® (TOP®).

At Wyman, we are stewards in ensuring **ALL YOUTH** have the opportunities needed to thrive in learning, work and life. With hundreds of teens just like Alexis succeeding across the region, we pursue a future in which each generation thrives — and changes our future for the better.

## 1 ALEXIS FACES EARLY CHALLENGES

Alexis was already building life skills before she could speak. By utilizing sign language, she advocated for her family, and communicated for her mother, who is deaf. By age six, she was helping her mother shop for groceries, negotiate utility payments and communicate with neighbors.

### FACT



STRESS, INEQUITIES AND POVERTY ARE PROVEN TO HINDER A YOUNG PERSON'S SUCCESS.



### IMPACT

THERE IS AN \$11 RETURN FOR EVERY \$1 SPENT ON PROGRAMS, LIKE WYMAN'S, THAT HELP YOUTH BUILD THEIR STRENGTHS.

## 2 ALEXIS JOINS WYMAN PROGRAMS

Academics were never a weakness, but Alexis struggled to believe in herself. Her teachers knew that with additional support, she could blossom into a powerful young leader. They nominated Alexis for Wyman's programs. Alexis was immediately immersed into an environment filled with teens who also had big dreams, and staff who would empower her to excel.

### FACT

IN ST. LOUIS, NEARLY **50%** OF YOUNG PEOPLE FACE INEQUITIES.

### IMPACT

AFTER SERVING YOUTH FOR MORE THAN 120 YEARS, WYMAN PROVIDES NATIONALLY RECOGNIZED, SHORT AND LONG-TERM RESEARCH-BASED PROGRAMS FOR OVER **4,800** TEENS REGIONALLY | **22,000** TEENS NATIONALLY

## 3 ALEXIS DISCOVERS HER STRENGTHS



When pushed out of her comfort zone during Wyman programs, Alexis (above, right) realized the importance of the reliable and compassionate support system that surrounded her, from peers in program to the adults she worked with.

Wyman challenges helped Alexis build self-confidence, leadership skills and a support system:

- When her peers and Wyman staff cheered her on as she reached the top of a 50-foot climbing wall, Alexis gained a sense of belonging and realized others believed in her abilities.
- While whitewater rafting a treacherous river, Alexis learned to lead her team through challenging situations and lean on others for support.
- While hiking through the mountains of Tennessee, she learned how to leverage individual strengths and identify resources to accomplish shared goals.

### FACT

NEARLY 50 PERCENT OF TEENS DON'T FEEL VALUED OR BELONGING IN SCHOOL, AND

**1 IN 3**

YOUNG PEOPLE WILL GROW UP WITHOUT A NETWORK TO ENCOURAGE THEIR SUCCESS

### IMPACT

MORE THAN 94 PERCENT OF FIRST AND SECOND-YEAR PARTICIPANTS IN WYMAN'S PROGRAMS FELT CONFIDENT THAT THEY COULD MAKE TOUGH DECISIONS, AND

**91%**

REPORTED A SENSE OF BELONGING.

## 4 ALEXIS PERSISTS IN HIGH SCHOOL

Alexis considered dropping out of high school to contribute to her family's income, but her Wyman coach, Danielle, supported and encouraged her to persist.

### FACT

NATIONALLY, ONLY

**84%**

OF HIGH SCHOOL TEENS GRADUATE ON-TIME.

### IMPACT

100 PERCENT OF HIGH SCHOOL TEENS IN WYMAN'S PROGRAMS SECURE THEIR DIPLOMAS ON-TIME.

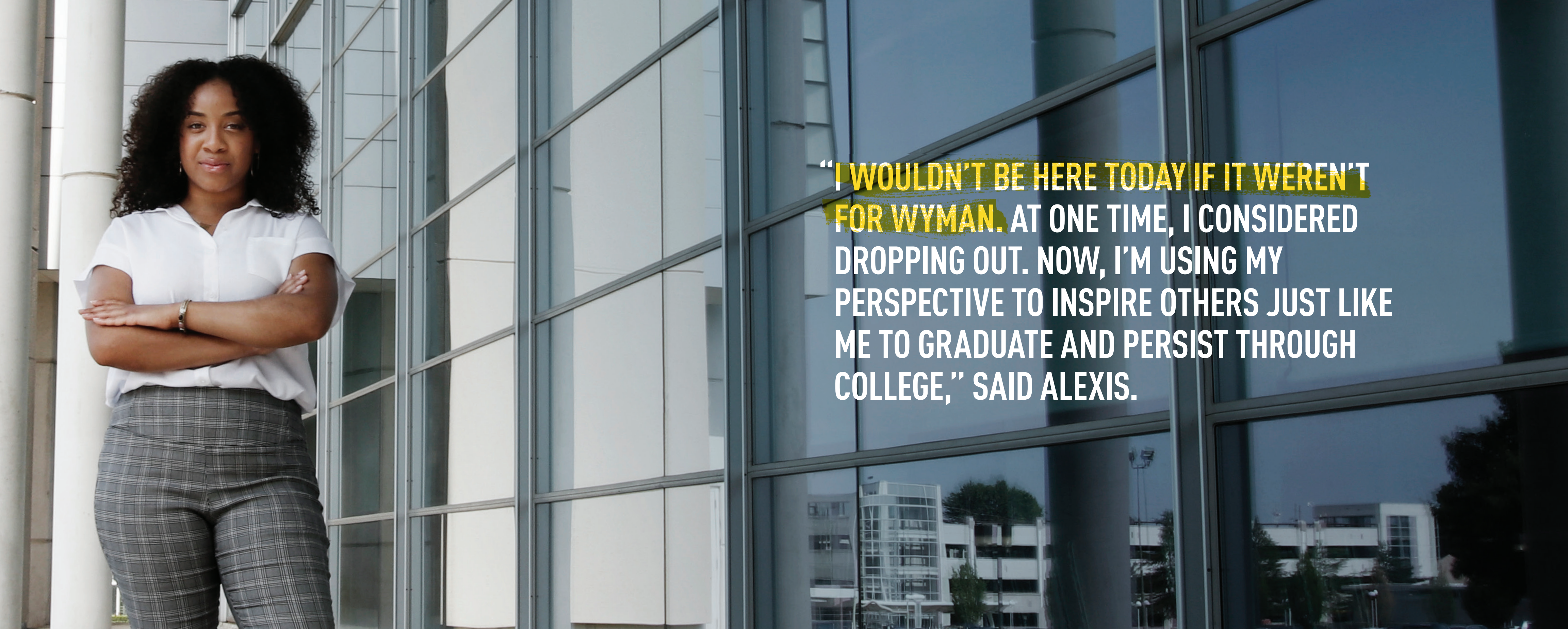
**100%**



Every teen in Wyman programs works closely with a knowledgeable, caring and responsive Wyman team member. Alexis' coach, Danielle (pictured above) has been there to support Alexis since her first day.



During her first two summers in program, Alexis spent time at Wyman's camp in Eureka, Mo., where she made connections with her peers and developed leadership skills to support her efforts toward success. See Alexis in the above photo in blue, surrounded by her peers in program.



**"I WOULDN'T BE HERE TODAY IF IT WEREN'T FOR WYMAN. AT ONE TIME, I CONSIDERED DROPPING OUT. NOW, I'M USING MY PERSPECTIVE TO INSPIRE OTHERS JUST LIKE ME TO GRADUATE AND PERSIST THROUGH COLLEGE," SAID ALEXIS.**

**5 ALEXIS BEGINS COLLEGE**

Danielle met with Alexis regularly to ensure she was prepared for college. Alexis had the opportunity to tour universities, compare college costs, study for the ACT and apply for financial aid. As a result, Alexis won a full scholarship to Missouri State University (MSU). Wyman programs also include opportunities for professional networking, job shadowing and resume building.

**FACT**  
NATIONALLY, ONLY **69%** OF TEENS ENROLL IN POST-SECONDARY INSTITUTIONS FOLLOWING HIGH SCHOOL.

**IMPACT**  
WITH SUPPORT, MORE THAN 90 PERCENT OF WYMAN TEENS ENROLL IN POST-SECONDARY OPPORTUNITIES FOLLOWING HIGH SCHOOL; MANY ARE FIRST-GENERATION COLLEGE STUDENTS. **90%**



A Wyman team member (center) presents Alexis (left) and her peer in program (right) with comprehensive scholarships to attend Missouri State University.

**6 ALEXIS LEADS**

Although Alexis didn't speak until the age of four, she let her voice shine advocating for equity on MSU's Diversity Recruitment Council. She hosted workshops to empower students with the skills she had learned in Wyman's programs, and co-founded an organization to help young girls gain confidence through artistic expression. Wyman coaches continued to help Alexis balance her leadership roles and academics.

**FACT**  
NATIONALLY, ONLY **72%** OF TEENS PERSIST TO THEIR SECOND YEAR OF POSTSECONDARY EDUCATION.

**IMPACT**  
IN 2017, 90 PERCENT OF WYMAN TEENS PERSISTED INTO THEIR SECOND YEAR OF POSTSECONDARY EDUCATION. ALL ARE ENCOURAGED TO TAKE ON LEADERSHIP ROLES. **90%**

**7 ALEXIS BRINGS HER DREAMS TO LIFE**

In 2019, Alexis will become her family's first college graduate. As a member of Wyman's summer program team, she helps other teens understand they're worthy of a brighter future. Recently, America's Promise Alliance (APA), led by former U.S. Secretary of State and Chairman of the Joint Chiefs of Staff, Colin Powell, selected Alexis to help guide the organization's efforts to end high school dropout.

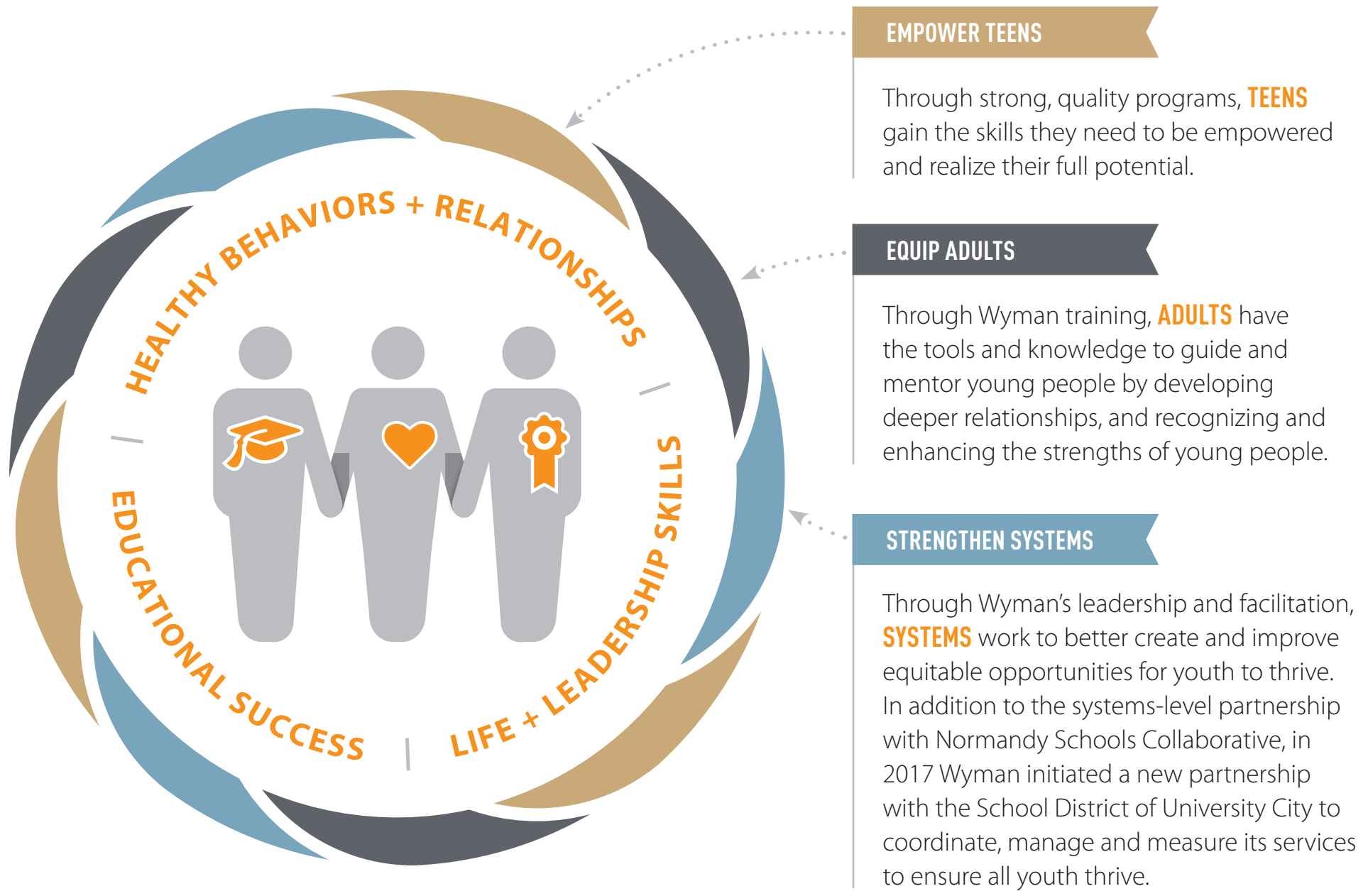
**"WE ARE HONORED TO STAND BEHIND ALEXIS, AND THOUSANDS OF YOUNG PEOPLE ON THEIR JOURNEY TO SUCCESS. LIKE ALEXIS, MILLIONS OF TEENS HAVE THE POTENTIAL TO THRIVE, BUT TOO MANY FACE THE WIDENING OPPORTUNITY GAP.**

TOGETHER WITH OUR DONORS, PARTNERS AND STAFF, WE'VE GOT THE RIGHT SOLUTIONS IN PLACE TO CREATE POPULATION-LEVEL CHANGE. WE APPRECIATE OUR PARTNERS AND DONORS WHO ARE HELPING US CREATE A VIBRANT FUTURE FOR OUR TEENS AND COMMUNITIES."



Claire Wyneken, Wyman President and CEO.

# WYMAN'S STRATEGY FOR ACTION



Wyman has deployed successful, evidenced-based solutions that help teens transform their destinies and communities, both locally and nationally.

**3,500**  
**STUDENTS**

SUPPORTED THROUGH OUR PARTNERSHIP WITH NORMANDY SCHOOLS COLLABORATIVE.



**NEARLY**  
**900**

ADULT FACILITATORS POSITIVELY IMPACT THE LIVES OF THOUSANDS OF YOUTH.

**22,000**  
**YOUTH SERVED**

IN THE U.S. ANNUALLY, WITH 4,000 DIRECTLY IMPACTED EACH YEAR FROM THE ST. LOUIS REGION THROUGH WYMAN'S TOP®.



**150,000**  
**LIVES**  
TOUCHED SINCE 2010.